



CHOSEN FOR CHARACTER

ESTABLISHED 1925

**MULTI AWARD WINNING
BRICKWORKS**

History

Situated adjacent to Wellacre Quarry and renowned for its outstanding Jurassic lower lias clay, Northcot has its main ingredient for quality facing bricks readily available. The brickworks was established by Spencer Churchill in 1925 and was taken over by its current owner in 1962.

Present Day Northcot

Northcot is a family-owned business, situated in the Cotswolds, that is passionate about being the best and providing individual service to each of our customers. It produces bricks of character, made by Master Brickmakers. Customer support services include brick matching advice and 48 hour sample dispatch.

Chosen for Character

Northcot Brick is one of the UK's few remaining independent brick manufacturers, situated in the village of Blockley in the heart of the Cotswolds.

Originally known as Northwick, the company was established in 1925 by Captain E. G. Spencer-Churchill, the cousin of Winston Churchill, in order to provide housing and jobs for the local population, particularly the families, which lived on his estate.



Master Brickmakers

Handmade

Genuine Handmade Bricks, each brick is thrown into a bench mould. Creating bricks of individual quality and natural beauty.



Machine-made

Machine-made wirecut bricks produced in smooth, sand-faced and rustic textures. Traditionally made, coal-fired bricks of outstanding character.



Award Winning Brickworks

Designed by MUMA architects, Northcot created a unique bespoke Whitworth blend for this new art gallery in Manchester. Over 100,000 facing bricks and purpose made special shapes were supplied to the project.



SUPREME AWARD

2015



BEST PUBLIC & EDUCATION BUILDING

In the 1930's the quarry was principal supplier to the largest brick building in Europe, Battersea Power Station. Brickwork commenced on Station A in 1931 with Station B being completed in the early fifties. The architect Sir Giles Gilbert Scott, chose a brick 'cathedral style' with its iconic towers Battersea is one of London's leading landmarks.



Award Winning Brickworks

The Newport Street Gallery designed by Caruso St.John won both the Supreme BDA Award and the Stirling Prize using Northcot's Newport Light & Dark blends.



SUPREME AWARD

2016



BEST PUBLIC BUILDING



Genuine Handmade

“A natural choice using traditional methods for character and beauty”.

Handmade bricks have a special natural quality, often missing from mass production. At Northcot, genuine bench-moulded handmade bricks are hand-thrown using traditional methods that give each brick a beauty and character of its own.

Northcot handmade bricks are renowned for their subtle colours and texture, coupled with their ability to achieve an instant maturity that blends in with the old, making them ideal for restoration work, as well as creating beautiful and individual effects in the new. This makes Northcot a natural choice when an extra aesthetic dimension is required.

As well as traditional coal-fired sand-faced handmades, Northcot manufactures a unique range of semi-smooth handmade bricks. Both the sand-faced and smooth bricks are now available in genuine 68mm Southern Imperial sizes, in addition to 65mm and 73mm industry standard sizes, and non-standard and purpose made options.





AUTUMN BROWN



BOURTON MANOR ANTIQUE



BOURTON MANOR



BRICKFIELD ANTIQUE



BRICKFIELD ORANGE



HANDMADE ASSORTED RECLAIM



DRAYCOTT RED



LYNEHAM RED ANTIQUE



LYNEHAM RED



NORFOLK RED



MARLBOROUGH MELLOW



PACKWOOD ANTIQUE



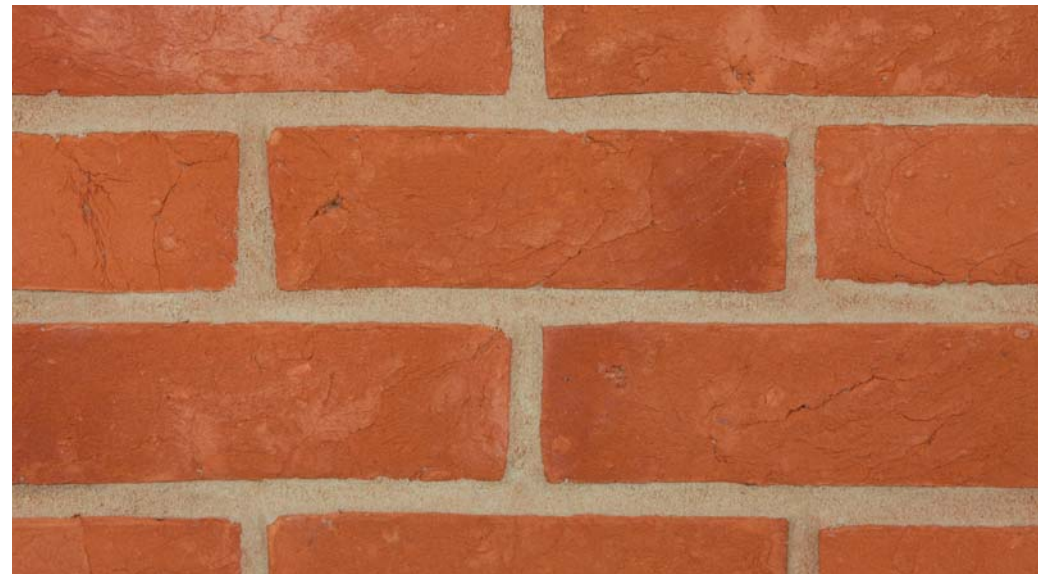
PACKWOOD RESTORATION



PLUMSTEAD ANTIQUE



PACKWOOD RURAL



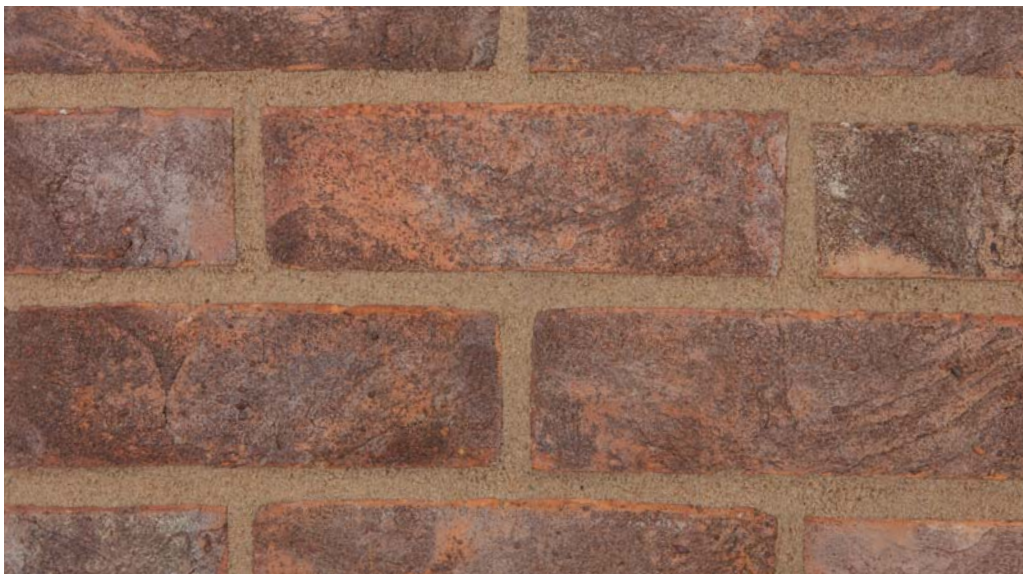
PLUMSTEAD ORANGE



REGAL MULTI



SOUTHWOLD

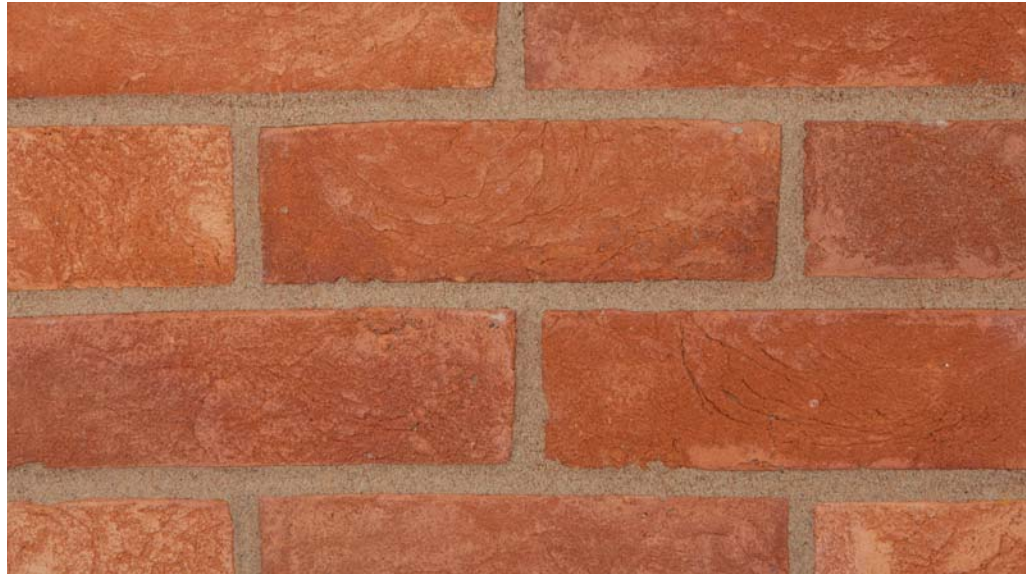


SILVER GREY



STRATFORD ANTIQUE

Sand-faced or semi smooth textures



STRATFORD MELLOW



TUDOR RESTORATION



SUFFOLK RED



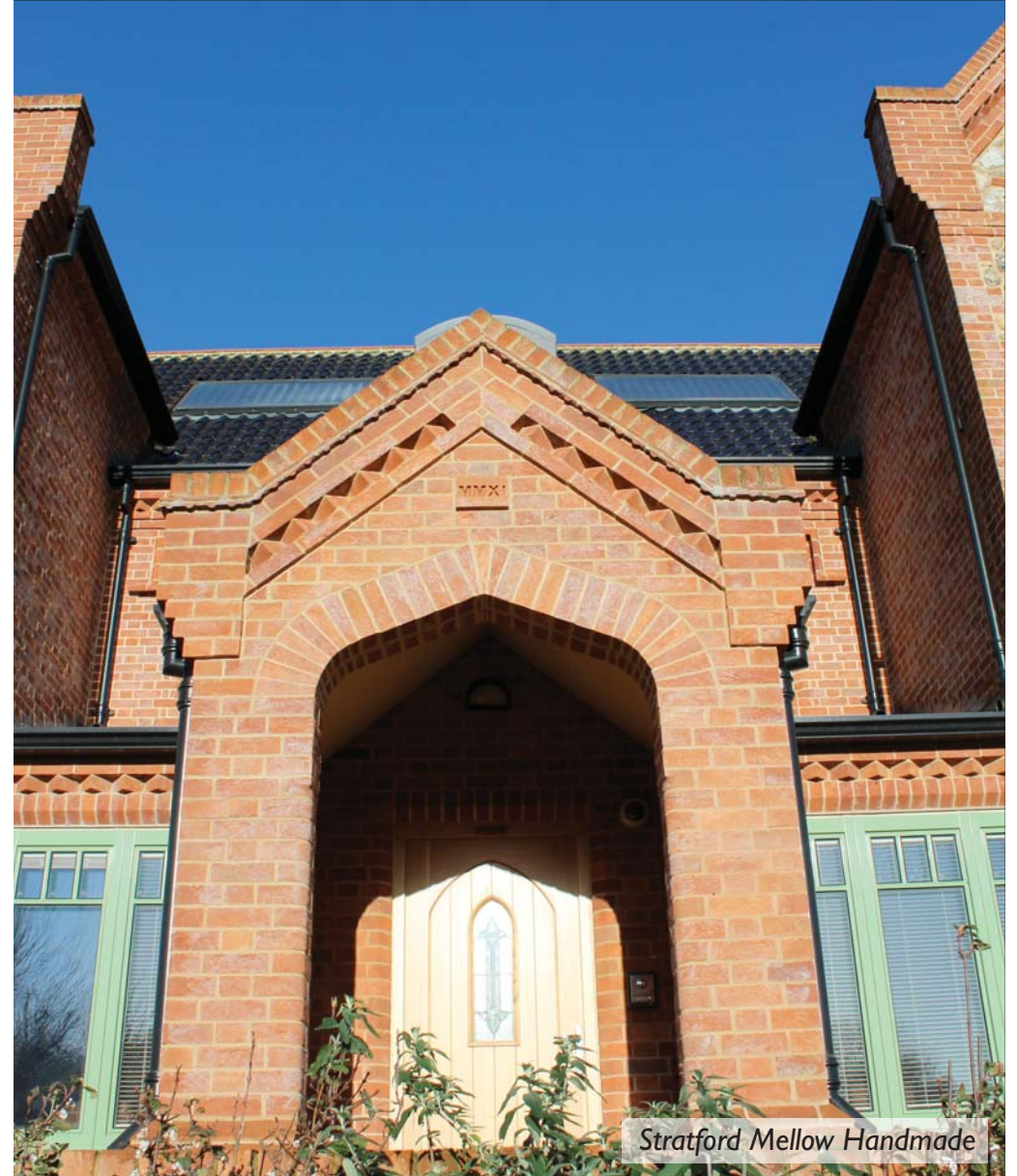
WELLACRE ANTIQUE



WINDSOR RED



WOODSTOCK WEATHERED



Sand-faced or semi smooth textures

The Cotswold Collection

“A natural choice using traditional methods for character and beauty”.

Here in the Cotswolds, we at Northcot Brick have spent several years developing an exciting and totally new, innovative and individual range of bricks. Our challenge has been to make a brick that combines our outstanding expertise and skills as makers of characterful bricks and exploits the best characteristics of our clay with the latest technology.

These new bricks, the Cotswold Collection, have a unique rugged texture, with distressed arrisses and a variety of finishes. They provide an individual brick combination that quite literally cannot be matched.

The Cotswold Collection is blended by hand providing a consistent mix of bricks within each pack. A bespoke blend to match an existing project or for your own individual new build requirements is also available on request.



Cotswold Blend

THE COTSWOLD COLLECTION



COTSWOLD BLEND



COTSWOLD RED



COTSWOLD ORANGE



BLENHEIM YELLOW BLEND



CAMBRIDGE OLDE ENGLISH



BURFORD OAST BLEND



CHEVELEY PARK MIXTURE



KENSINGTON ENGLISH MIXTURE



LONDON OLD TOWN



KNIGHTSBRIDGE HARVEST GOLD



SELBORNE ORANGE MULTI

Reclaim

“A cost effective way for a building to remain in keeping with its origins and surroundings”.

Reclaim bricks are ideal for matching with older buildings, renovations or creating an instant mature look in a modern structure. Each range can be supplied as plain colours or with blacks and/ or whites included. 65mm and 73mm sizes are available, either in full loads from the works or locally from a network of stockists.

Our Cherwell and Reclaim range are a product produced with a distressed appearance intended to soften the outline of individual bricks to create a more interesting visual appearance of the brickwork as a whole. The bricks have the benefit of a smooth back and can simply be reverse face laid should the surface of the product appear to be too chipped from the ‘Rumbling’ process. This ‘Tumbled’ range of facing bricks are frost resistant and fully comply with BS EN77-1

Unlike many reclaimed and second hand bricks, all Northcot bricks are rated F2 and as such frost-resistant. Therefore, the high wastage element normally experienced with second hand bricks is not an issue when buying new, guaranteed Northcot products.





BERKSHIRE RED



CHERWELL HERITAGE BLEND



CHERWELL AUTUMN BLEND



CHERWELL MIXTURE

Available in 65mm and 73mm sizes



CHERWELL RED



CHERWELL TERRACE BLEND



CHERWELL RUSSET



CHERWELL URBAN ANTIQUE



MALVERN RED



WESSEX MIXTURE



RECLAIM MIXTURE



WESSEX RED

Available in 65mm and 73mm sizes

Traditional

“Available in a complementary range of textures, colours and sizes”.

The bricks in the traditional range are renowned for their unique charm and character. Available in either sand-faced, semi-smooth or rustic textures, the range has evolved over many years and continues to develop. A large number of merchant stockists ensure availability of the range throughout the country.

What makes Northcot so different? Northcot is one of the very few manufacturers that still has local reserves and uses the same surface clay that has been used over the centuries. This clay, when fired, produces an intense orange base colour.

The delicate and subtle shading created by the Northcot process of burning with coal in a traditional coal-fired kiln, results in an exciting range of naturally coloured products which are always in sympathy with the built environment. Our traditional methods achieve effects that more modernised brickworks simply cannot reproduce.





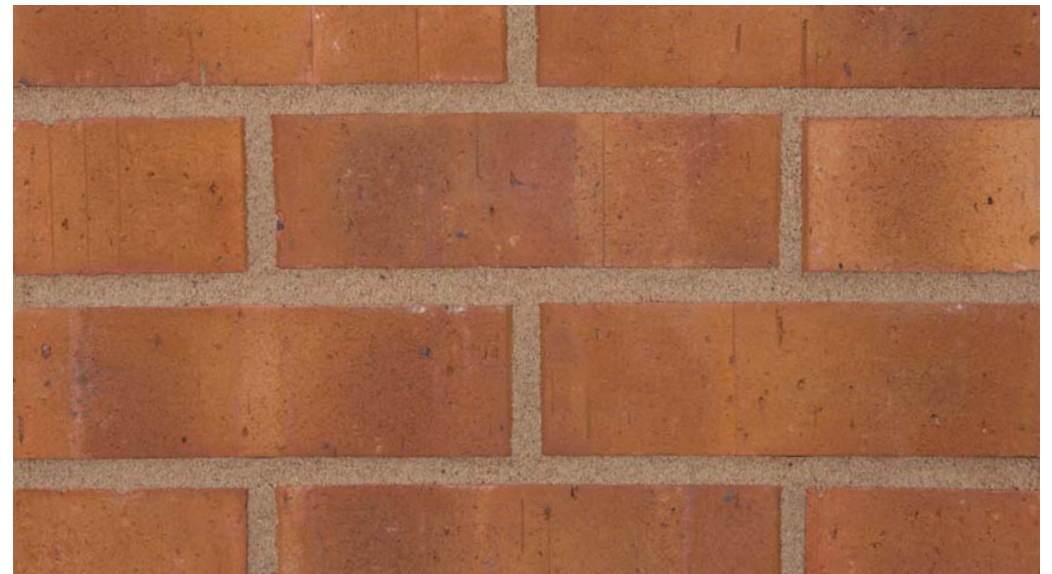
AUTUMNTINT



BROADWAY BUFF



AVON SMOOTH



COTSWOLD BROWN



DONNINGTON DEEP RED



LIGHT RED RUSTIC



KILN WHITE ANTIQUE



MULTI RED RUSTIC



REGENCY ANTIQUE



VICTORIAN ANTIQUE



REGENCY ORANGE



VICTORIAN GREENWICH BLEND

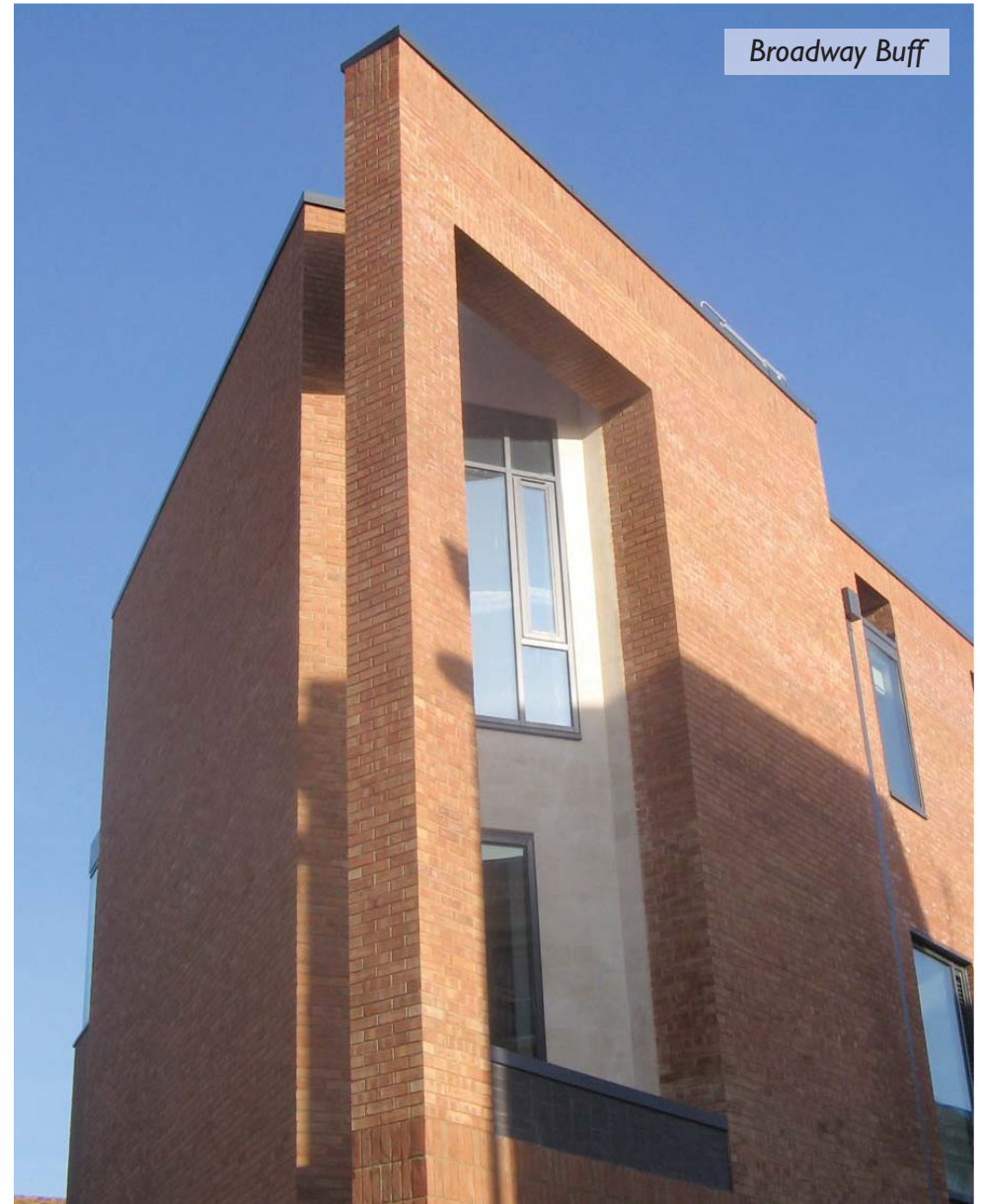
Mixed load options available



VICTORIAN MELLOW



Whitworth Blend



Broadway Buff



Commercial

The challenge to any specifier, client or planner is to choose the right brick for their project in a particular built environment. Northcot Brick offer handmade and machine made options with the added flexibility of bespoke blending, weathering for 'fine tuning'. We also make special shapes in both manufacturing processes.

Whether you are looking to specify a brick for a traditional build or a more modern design concept, Northcot have a large premium range of bricks in smooth, sand faced and rustic textures together with the flexibility to offer a number of unique new build brickwork solutions.



SUPREME AWARD

2015



Newport Light & Dark Blends



"The Newport Street Gallery involved the conversion of a terrace of three listed Victorian buildings, flanked at either end by new buildings, stretching along the whole length of the street."

"In creating the new facades, we worked closely with Northcot Brick, who used their brick-matching expertise to create two bespoke machine made blends - Newport Light and Newport Dark - to complement the industrial buildings."

Their skill and perseverance helped us to achieve our vision of creating a cohesive and impressive street elevation that blends modernity with links to its industrial past".

Tim Collett

Caruso St John Architects

SUPREME AWARD

2016





St. James Blend



EPR Architects chose a combination of three Northcot Handmade bricks to create a unique bespoke blend for this project in the heart of London.



Self Build and Individual Homes

Probably the single most important decision you will make on your new home is the choice of facing brick, as it is one aspect that will remain forever.

From traditionally coal-fired machine-made bricks to genuine hand-thrown bricks, Northcot offers a wide selection of unique facing bricks to make your home truly individual.

Free sample panels are available to help you choose the right brick type for your project or to show local planners. Technical advice on any aspect of brickwork related to your new home is also available if required. Please contact our sales office for further information.



Longworth Bespoke Handmade Blend

Stratford Antique Handmade



Shortlisted for Grand Designs House of the Year and 2016 BDA Awards John Parry Architects specified Northcot Stratford Antique Handmade bricks for this stunningly contemporary project in Berkshire.

**GRAND
DESIGNS
BRICK
AWARDS** 2016





Set in the heart of the Buckinghamshire countryside the client and Tyack Architects from Moreton-in-Marsh chose the Southwold handmade brick with several complimentary special shapes to great effect on this project with several chimney stacks.



Southwold Handmade



Norfolk Red

The client and architect on this country estate in Norfolk required a handmade brick but not in standard 65mm metric size so Northcot supplied 52mm x 230mm 'Imperial' size bricks to an agreed range of bespoke sizes, colours and textures. Purpose made special shapes and arch bricks highlight the superb detail in the brickwork on this stunning project.



Special Shapes

“A wide selection of shapes to add individuality to any property and match any brick, no matter what age, shape or colour”.

Besides a large variety of wire-cut facing bricks, bench-moulded handmade bricks and a selection of reclaim bricks, Northcot offers a wide range of Specials. Northcot takes pride in its specialist ability to match bricks from many parts of the country for renovations.

Special bricks are also available for unusual designs, renovations, extensions and for new builds, in order to create an enduring and quality finish. ‘Specials’ are available to match most brick types and can be supplied in either Metric or Imperial sizes.

To complete the range, arches, name plates and commemorative plaques can also be produced as special items.



Brick Matching

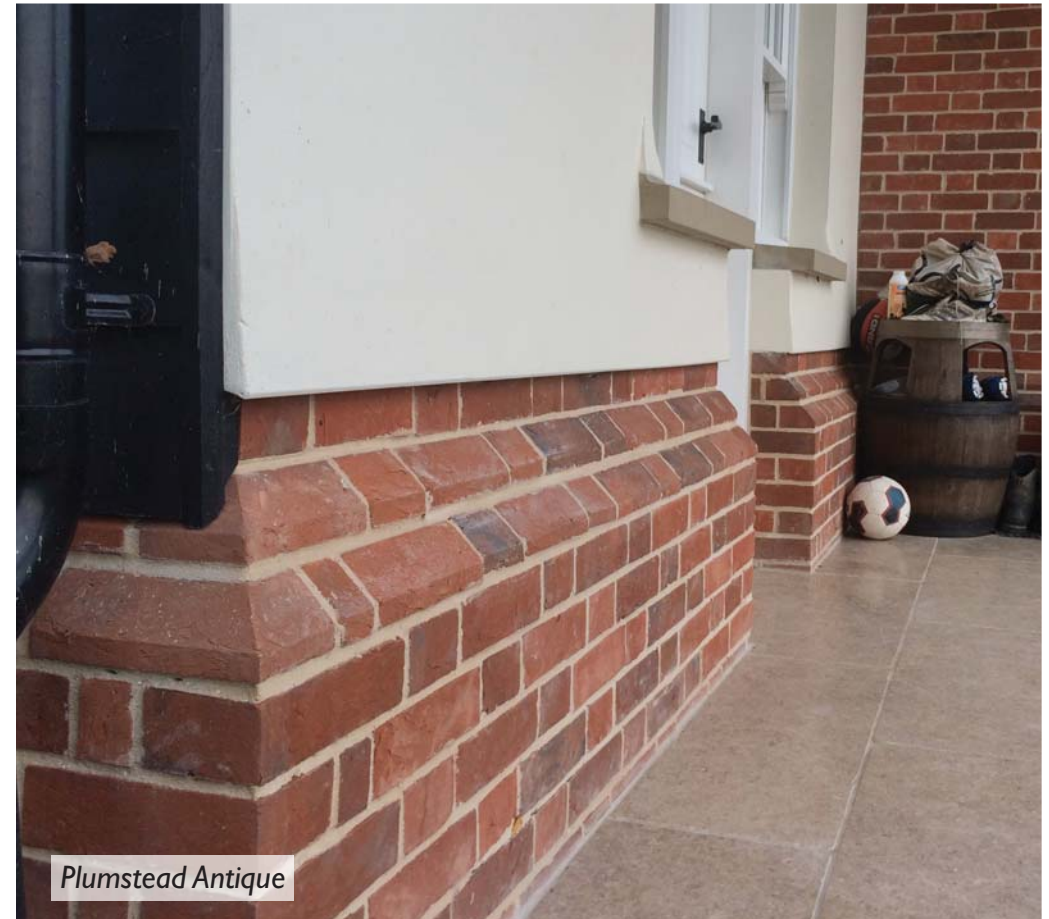
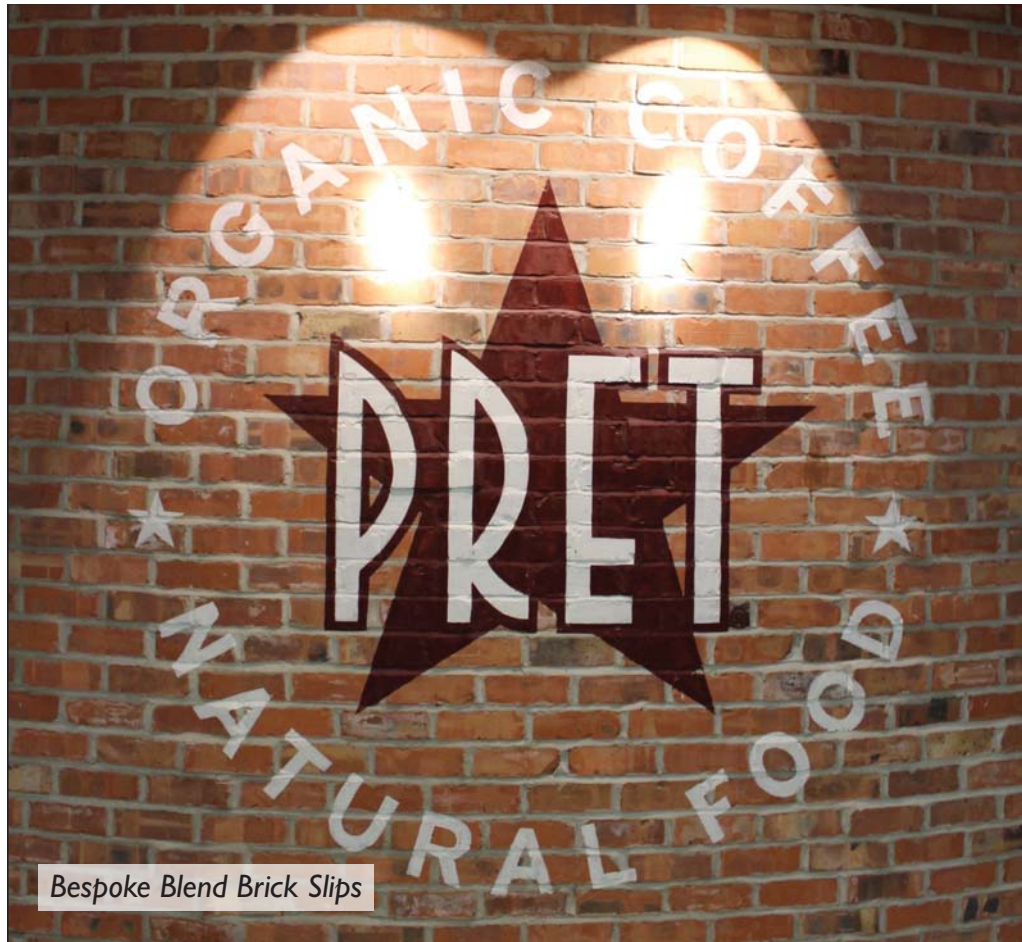
With a considerable reduction in the number of brickworks, in business in the UK, it has become increasingly difficult to match existing brickwork.

At Northcot, we have a bespoke weathering facility that substantially increases the potential of a closer colour match for the discerning client.

Email sales@northcotbrick.co.uk attaching digital photographs of the brickwork to be matched, together with details of sizes, quantity required and your address, and we will send appropriate samples to you.

Bespoke Blends

All Northcot bricks are hand sorted and then hand blended to exacting quality standards. As such we have the in house expertise and flexibility to blend more than one brick type for closely matching to existing brickwork or to create a uniquely individual blend.



Weathering

Northcot produce a wide range of facing bricks which have warm and subtle shades of character. We can also 'antique' our bricks to give them an aged and weathered appearance. Additionally we can vary the shades of weathering to match bricks on older buildings or to create a bespoke blend for a unique new project.

Choosing Northcot

The next steps.....



Stockists: Northcot bricks are available from our ever increasing network of national and independent builders merchants. Please call our sales office for your nearest stockist.



Sales Office: Along with national sales coverage, our experienced sales office team are there to advise on any customer enquiry or technical question you may have. Call them on **01386 700551**



Samples: We offer 48-hour sample despatch on samples of any of our products. Sample boards or brick boxes are available on request, along with our brochure.



Website: Visit www.northcotbrick.co.uk to view our constantly expanding range of facing bricks, request samples or download brochures using the contact page.



Self Build Shows: Northcot regularly exhibits at many of the homebuilding and self build shows. Please contact the sales office for complimentary tickets to our next show, and we'll look forward to seeing you there.



Works Visit: We welcome visitors to our brickworks in the Cotswolds. We have several large display areas of our bricks, built in panels for your viewing. Please contact us to arrange a visit.

You can create your own unique blend or even have a go at hand throwing your own brick with your name in it.

TECHNICAL SPECIFICATION

| | | | | | | |
|----------------------|--------------------------------------------------------------------------------------------------------------------------------------------------------------------------------------------------------------------------------------------------------------------------------------------------------------------------------------------------------------------------------------------------------------------------------------------------------------------------------------------------------------------------------------------------|-----------------------------------------------------|--------------------------------------------------|---------------------------------------------------------------------------|-----------------------|-----------------------|
| Brick Type | | | | New Products (higher specification) | | |
| Brick Type | HANDMADE | TRADITIONAL WIRECUT | RECLAIM & CHERWELL | | | |
| Brick Codes | | | | CHB | VGB (Wirecut) | Cotswold Collection |
| Appearance | Lightly creased genuine handmade | Extruded wirecut smooth, rustic, plain or sandfaced | Prematurely 'aged' during the production process | | | |
| Specification | Bricks are manufactured to BS EN 771-1 (BS 3921:1985 now withdrawn) | | | | | |
| Sizes | Metric: 215mm x 102.5mm x 50mm, 65mm 68mm 73mm 80mm Imperial: 9" x 4 ⁵ / ₁₆ " x 2", 2 ¹ / ₄ ", 2 ³ / ₈ ", 2 ¹ / ₂ ", 2 ⁵ / ₈ ", 2 ⁷ / ₈ ", 3", 3 ¹ / ₈ " | | | Non Standard: Most sizes can be accommodated in our production process | | 65mm 73mm |
| Specials | A full range of standard BS and purpose made Specials is available | | | | | |
| Compressive Strength | >24 N/mm ² | >60 N/mm ² | >60 N/mm ² | >60 N/mm ² | >60 N/mm ² | >60 N/mm ² |
| Durability | F2 | F2 | F2 | F2 | F2 | F2 |
| Tolerances | T1 | T2 | T1 | T1 | T1 | T1 |
| Range | R1 | R1 | R1 | R1 | R1 | R1 |
| Soluble Salt Content | S2 | S2 | S2 | S2 | S2 | S2 |
| Water Absorption | <17 % | <12 % | <12 % | <12 % | | |
| Packaging | Shrinkwrapped and wire banded with holes for forklift use | | | | | |
| Pack Sizes & Weights | Size (mm) | Qty/ pack | Wt (t) | Size (mm) | Qty/ pack | Wt (t) |
| | 50 | 650 | 1.229 | 50 | 650 | 1.070 |
| | 65 | 500 | 1.223 | 65 | 500 | 1.072 |
| | 73 | 500 | 1.280 | 73 | 500 | 1.195 |
| | 80 | 400 | 1.213 | 80 | 400 | 1.100 |
| | | | | 50 | 650 | 0.927 |
| | | | | 65 | 435 | 0.929 |
| | | | | 73 | 400 | 1.009 |
| | | | | 80 | 320 | |
| Workmanship | The recommendations of good practice made in the relevant British or European Standards regarding design and workmanship must be fully observed. Always mix from at least 3 packs, working diagonally down the blades, not horizontally across the tops of packs. Bricks & brickwork should be covered during construction to prevent saturation. | | | | | |
| Performance | All Northcot 1st quality bricks are Frost Resistant. Northcot Bricks are manufactured to F2 rating for Frost Resistance as described in BS EN 771-1:2011 "Specification for Clay masonry units". The specification is for masonry (walling) products which are to be used in brickwork designed and built in accordance with recommendations in BS PD 6697:2010 "Recommendations for the design of masonry structures to BS EN 1996-1-1 and BS EN 1996-2". The use of Sulphate Resisting Cement is recommended. Further details on website | | | | | |
| Samples | Usually within 48-hour dispatch | | | | | |
| Important Advice | Colours and textures reproduced here are as accurate as the printing process allows and final choices should not be made from this brochure in isolation. For the latest updates on technical information, please visit our website on www.northcotbrick.co.uk | | | | | |

Northcot's staff are committed to providing a flexible, prompt and courteous service. The Sales Office has more than 30 years experience and knows all there is to know about Northcot bricks. We also have experienced representatives available to advise and offer guidance when required. Our 48-hour sample despatch service is available, providing either 3 or 5 brick packs or slip-panels. Sixty brick site panels can be produced for local planning and/or conservation departments on your behalf.

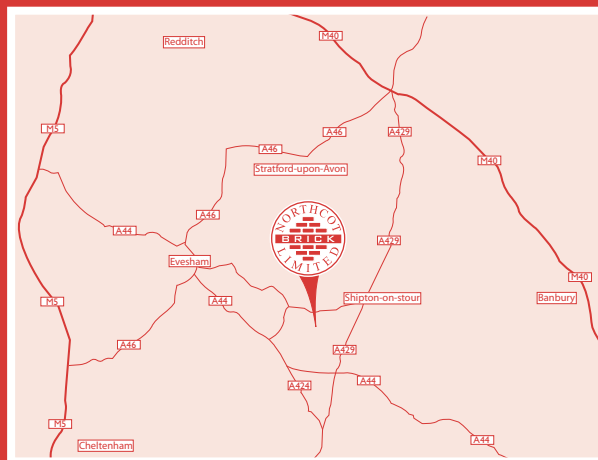
Northcot Brick Ltd
Station Road, Blockley, Nr. Moreton-in-Marsh, Gloucestershire GL56 9LH
Tel: 01386 700551 Fax: 01386 700852
 email: sales@northcotbrick.co.uk website: www.northcotbrick.co.uk



Northcot Brick Ltd
Station Road, Blockley,
Nr. Moreton-in-Marsh
Gloucestershire GL56 9LH

Tel: 01386 700551
Fax: 01386 700852

email: sales@northcotbrick.co.uk
www.northcotbrick.co.uk



How to find us...

Northcot Brick is situated about 1 mile outside of the village of Blockley on the B4479 near Moreton-in Marsh in Gloucestershire. From the south take the turning for Blockley off the A44. From the north take the turning for Chipping Campden/Paxford off the A429. The postcode for satellite navigation is GL56 9LH.